



Bellita - 1154 Sq. Ft.

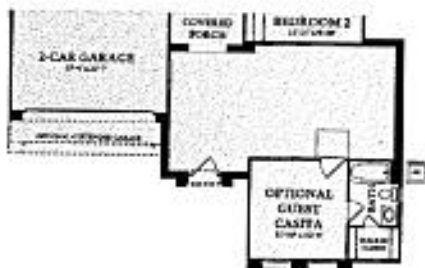
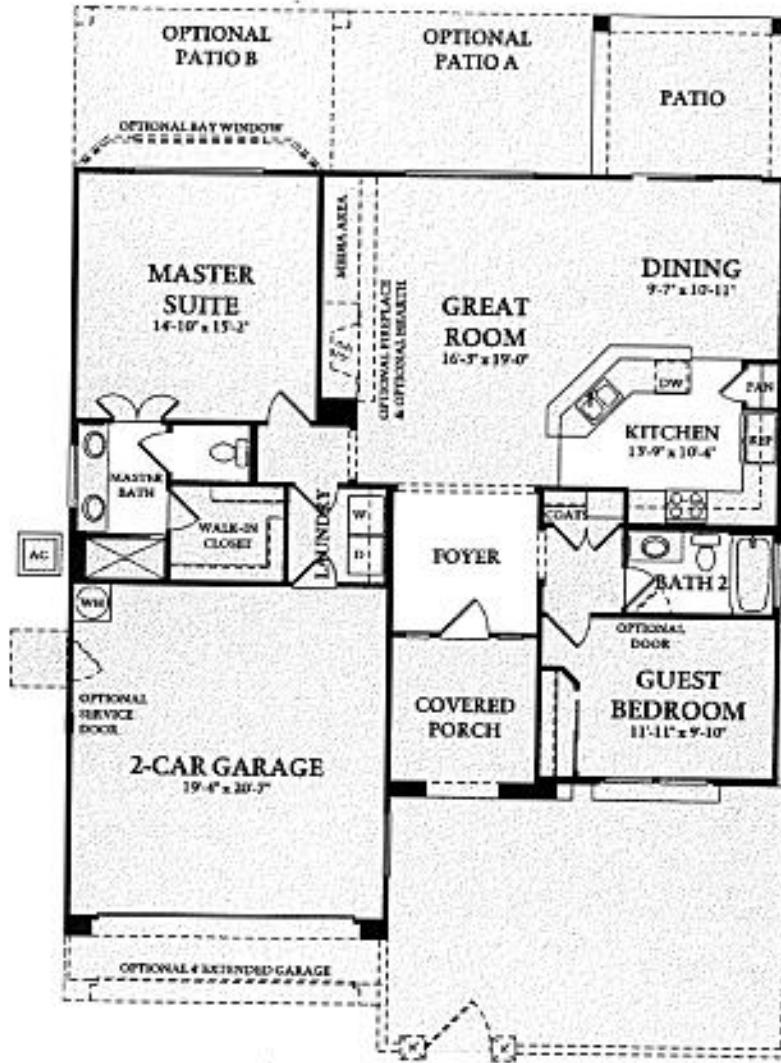
ELEVATION A



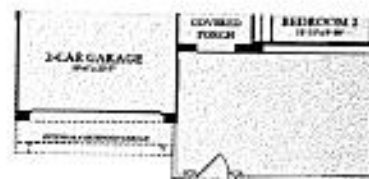
Quinta  
1283 Sq. Ft.

The Montecito

GREAT ROOM, 2 BEDROOMS, 2 BATHS, 2-CAR GARAGE, COVERED PATIO  
 LIVABLE AREA: 1,352 SQUARE FEET



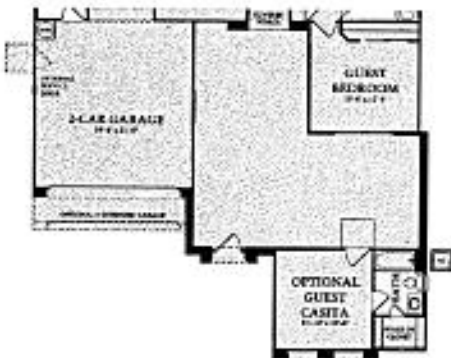
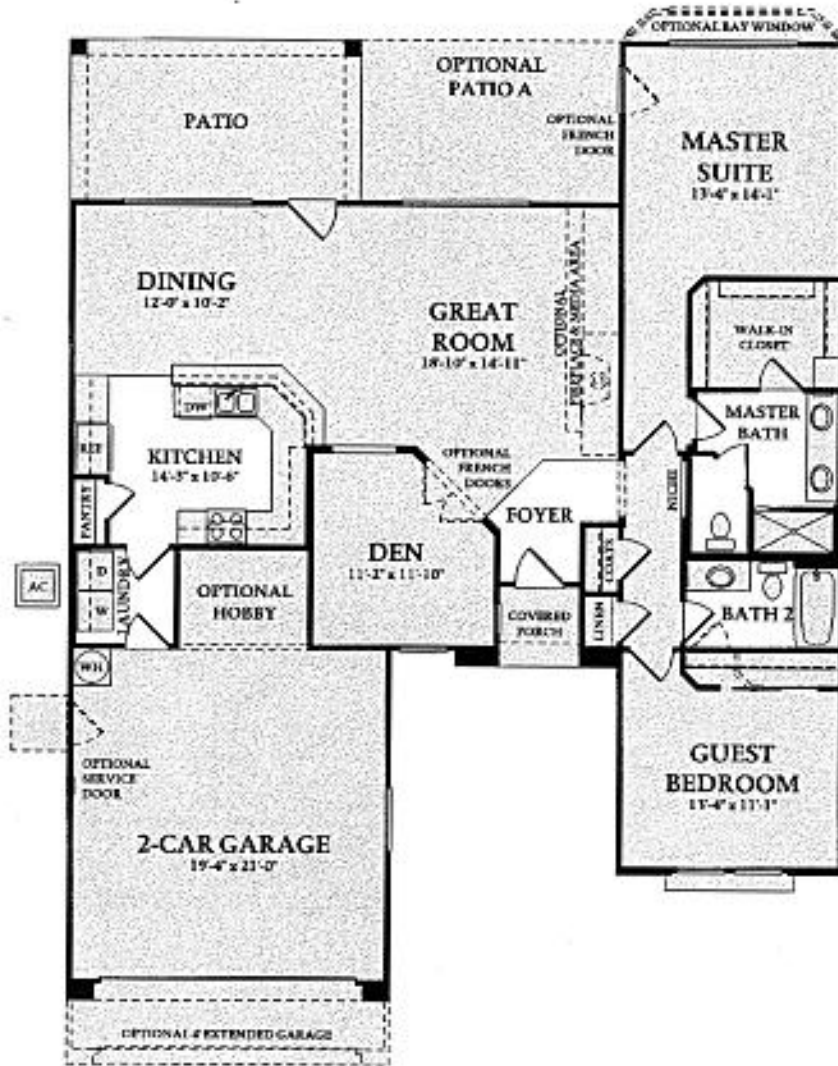
OPTIONAL FULL HEIGHT  
 OR 4' COURTYARD WALL  
 WITH GUEST CASITA



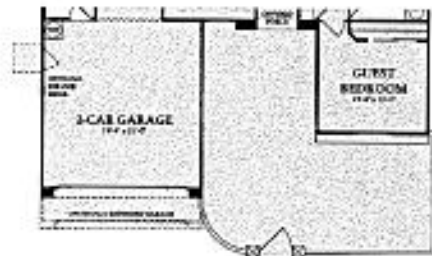
OPTIONAL FULL HEIGHT OR 4' HIGH  
 COURTYARD WALL WITH GATE OR DOOR

*The Arcada*

GREAT ROOM, 2 BEDROOMS, DEN, 2 BATHS,  
 2-CAR GARAGE WITH STORAGE SPACE, COVERED PATIO  
 LIVABLE AREA: 1,610 SQUARE FEET



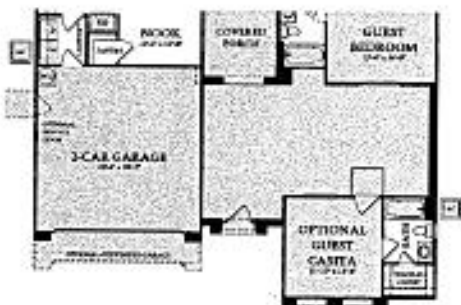
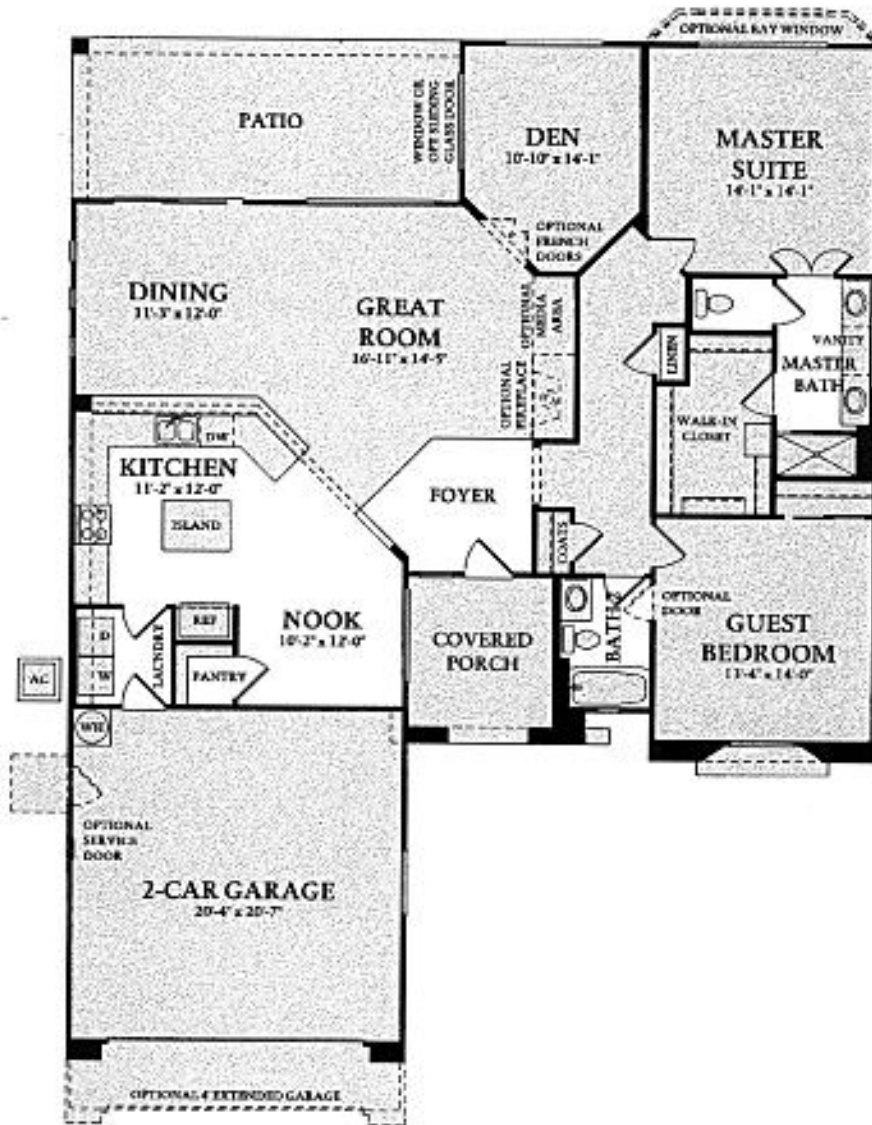
OPTIONAL FULL HEIGHT  
 OR 4' COURTYARD WALL  
 WITH GUEST CASITA



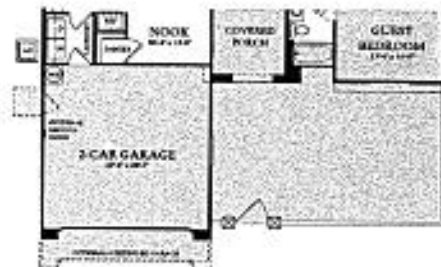
OPTIONAL FULL HEIGHT OR 4' HIGH  
 COURTYARD WALL WITH GATE OR DOOR

*The San Ysidro*

GREAT ROOM, BREAKFAST NOOK, 2 BEDROOMS, DEN, 2 BATHS,  
 2-CAR GARAGE, COVERED PATIO  
 LIVABLE AREA: 1,811 SQUARE FEET



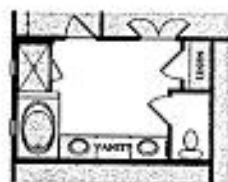
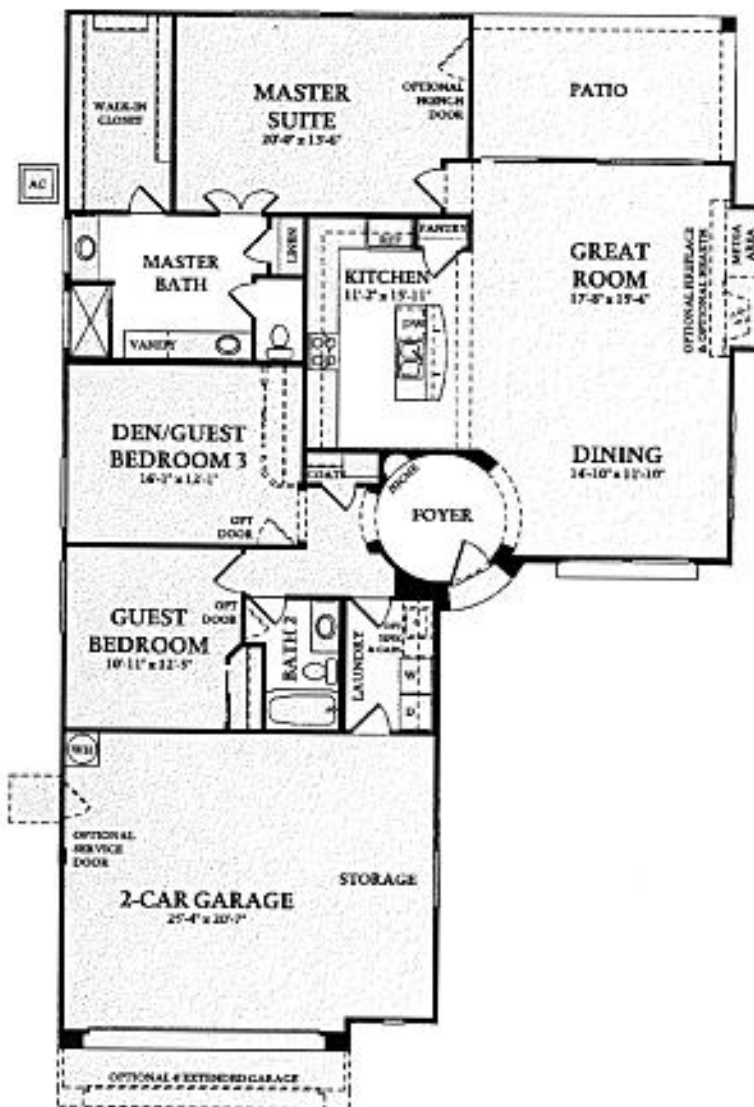
OPTIONAL FULL HEIGHT  
 OR 4' COURTYARD WALL  
 WITH GUEST CASITA



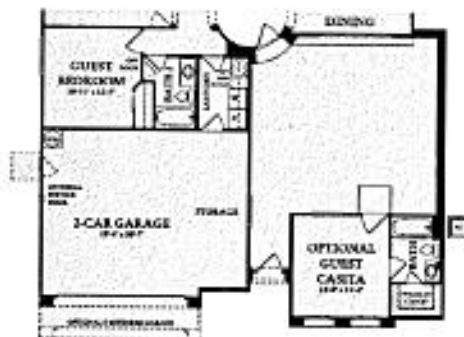
OPTIONAL FULL HEIGHT OR 4' HIGH  
 COURTYARD WALL WITH GATE OR DOOR

The San Marco

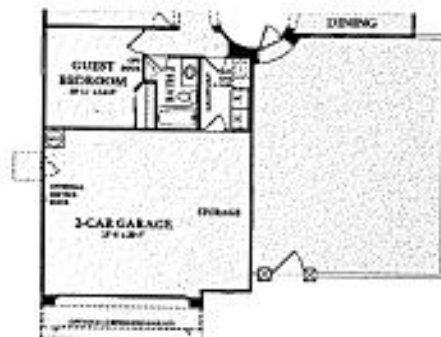
GREAT ROOM, 2 BEDROOMS, DEN, 2 BATHS,  
 2-CAR GARAGE WITH STORAGE SPACE, COVERED PATIO  
 LIVABLE AREA: 1,904 SQUARE FEET



OPT. LUXURY  
 MASTER BATH



OPTIONAL COURTYARD WALL  
 WITH GUEST CASITA

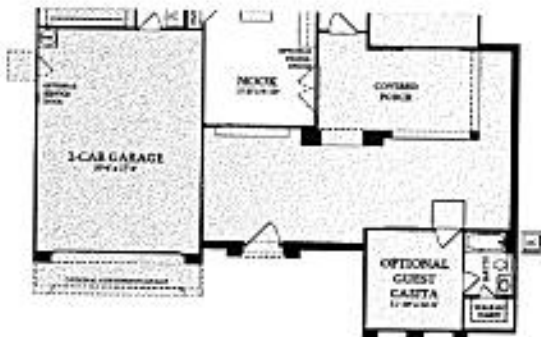
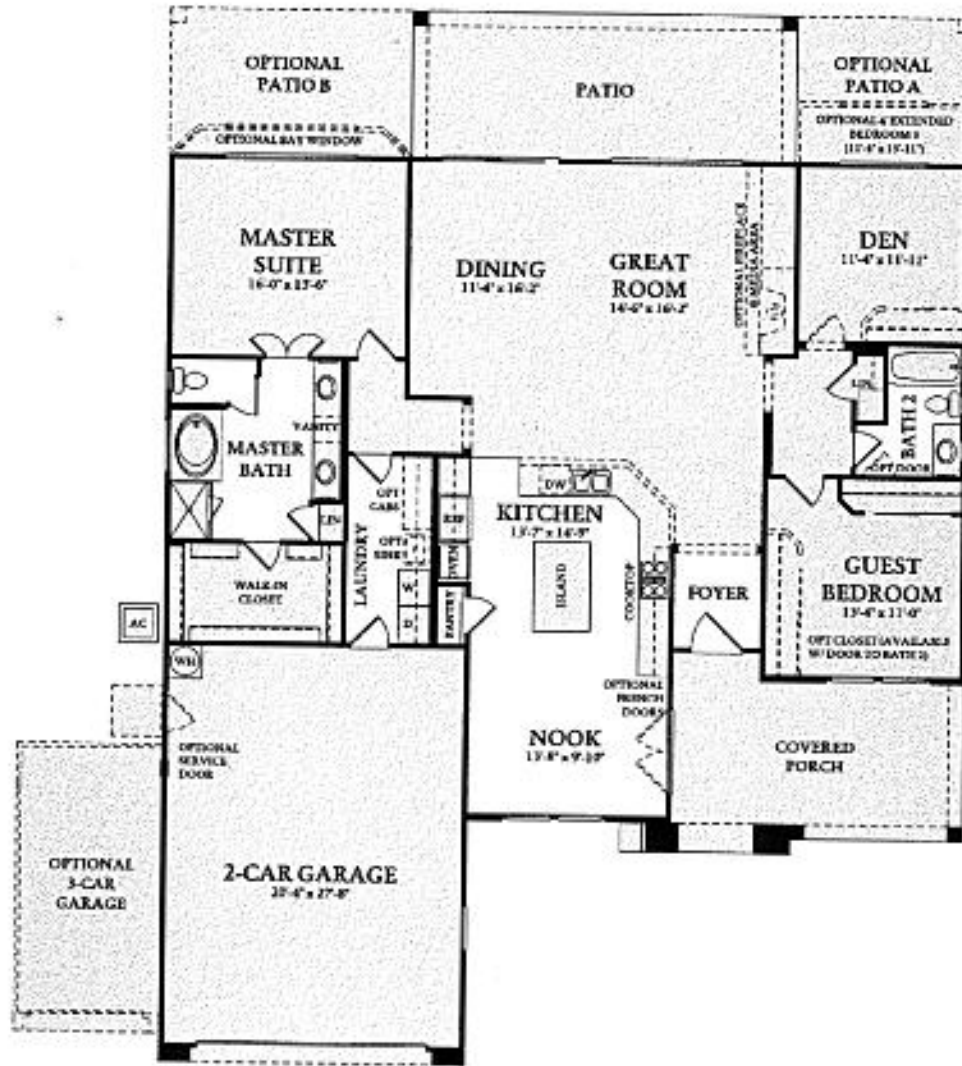


OPTIONAL FULL HEIGHT OR 4' HIGH  
 COURTYARD WALL WITH GATE OR DOOR

*The Encanto*

GREAT ROOM, DINING ROOM, BREAKFAST NOOK, 2 BEDROOMS, DEN,  
2 BATHS, EXPANDED 2-CAR GARAGE, COVERED PATIO

LIVABLE AREA: 2,070 SQUARE FEET



OPTIONAL FULL HEIGHT  
OR 4' COURTYARD WALL  
WITH GUEST CASITA

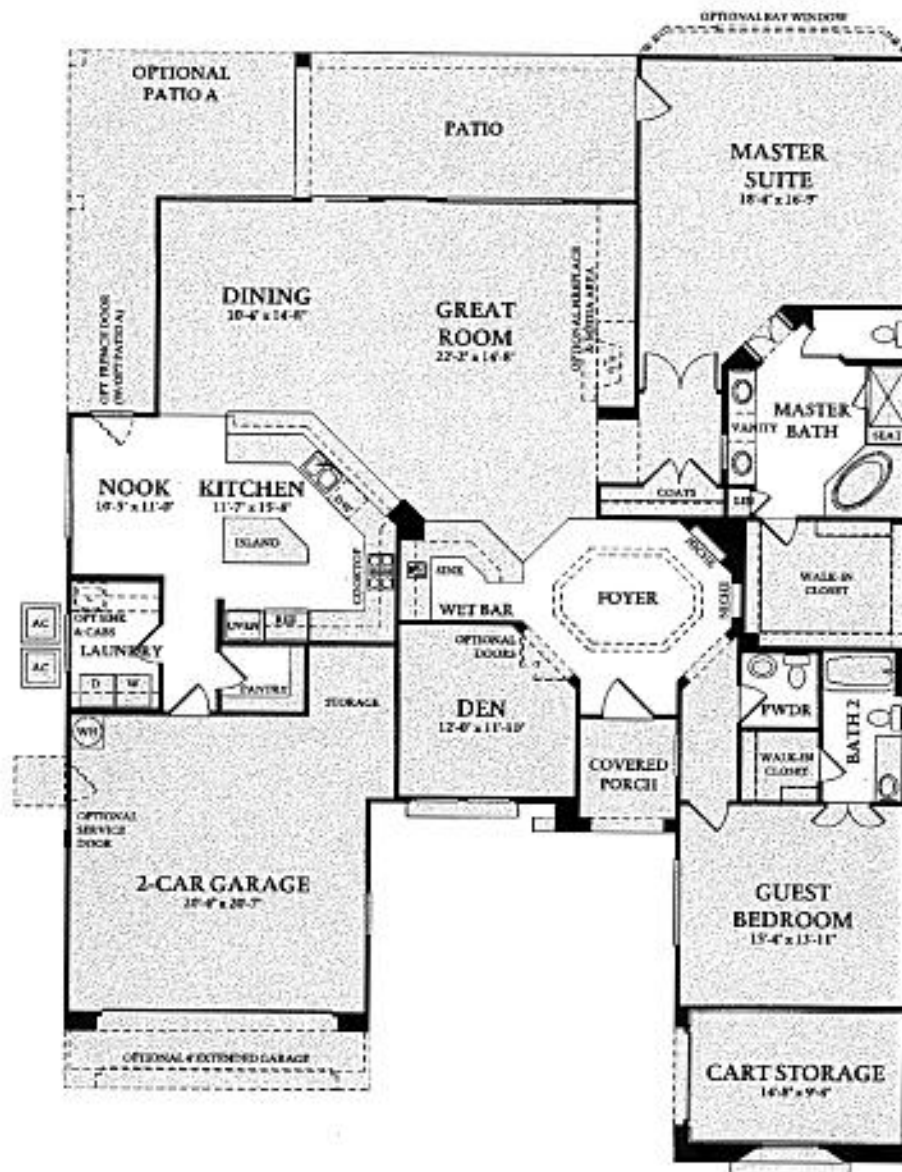


OPTIONAL FULL HEIGHT OR 4' HIGH  
COURTYARD WALL WITH GATE OR DOOR

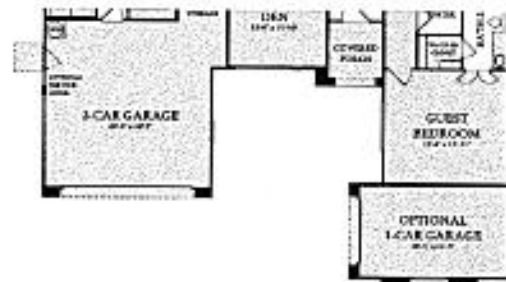


*The Mirada*

GREAT ROOM, BREAKFAST NOOK, WET BAR, 2 BEDROOMS, DEN,  
 2.5 BATHS, 2-CAR GARAGE, CART GARAGE, COVERED PATIO  
 LIVABLE AREA: 2,560 SQUARE FEET



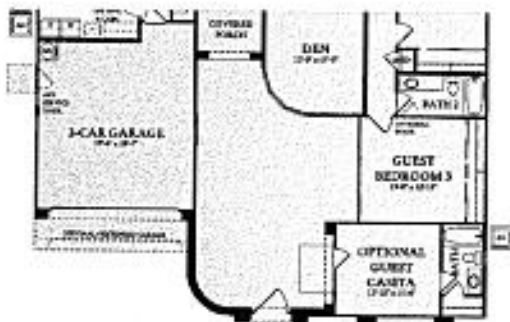
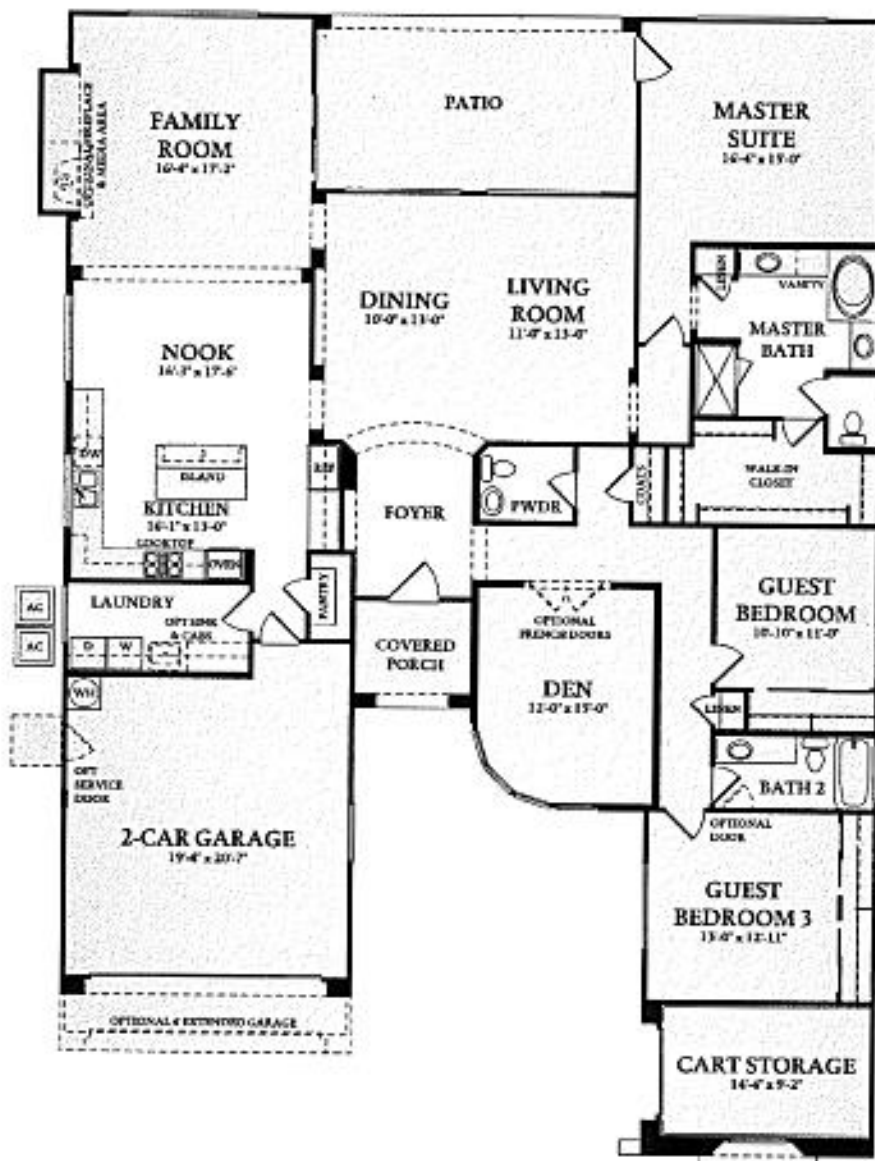
OPTIONAL FULL HEIGHT  
 OR 4' COURTYARD WALL  
 WITH GUEST CASITA



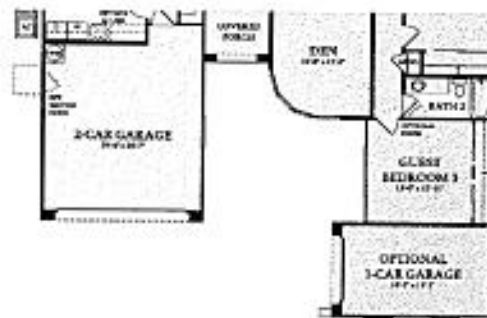
OPTIONAL  
 1-CAR GARAGE

*The Alameda*

FORMAL LIVING AND DINING ROOMS, FAMILY ROOM, BREAKFAST NOOK,  
 3 BEDROOMS, DEN, 2.5 BATHS, 2-CAR GARAGE, CART GARAGE, COVERED PATIO  
 LIVABLE AREA: 2,727 SQUARE FEET



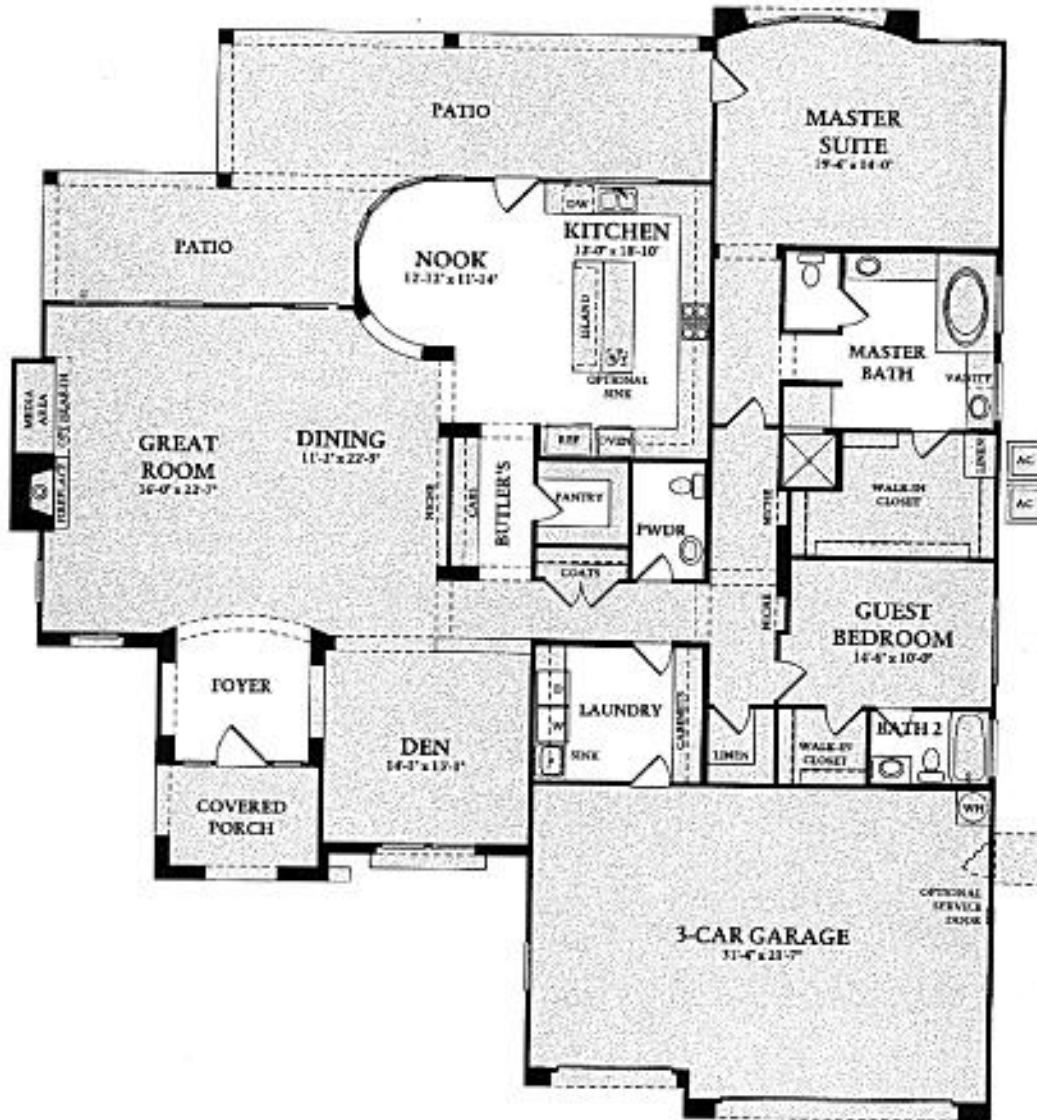
OPTIONAL FULL HEIGHT  
 OR 4' COURTYARD WALL  
 WITH GUEST CASITA



OPTIONAL  
 1-CAR GARAGE

*The Figueroa*

GREAT ROOM WITH FIREPLACE, BREAKFAST NOOK,  
2 BEDROOMS, DEN, 2.5 BATHS, 3-CAR GARAGE, COVERED PATIO  
LIVABLE AREA: 2,785 SQUARE FEET



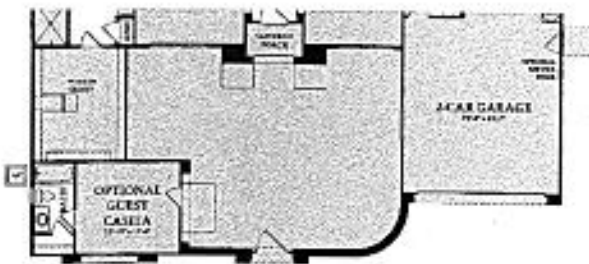
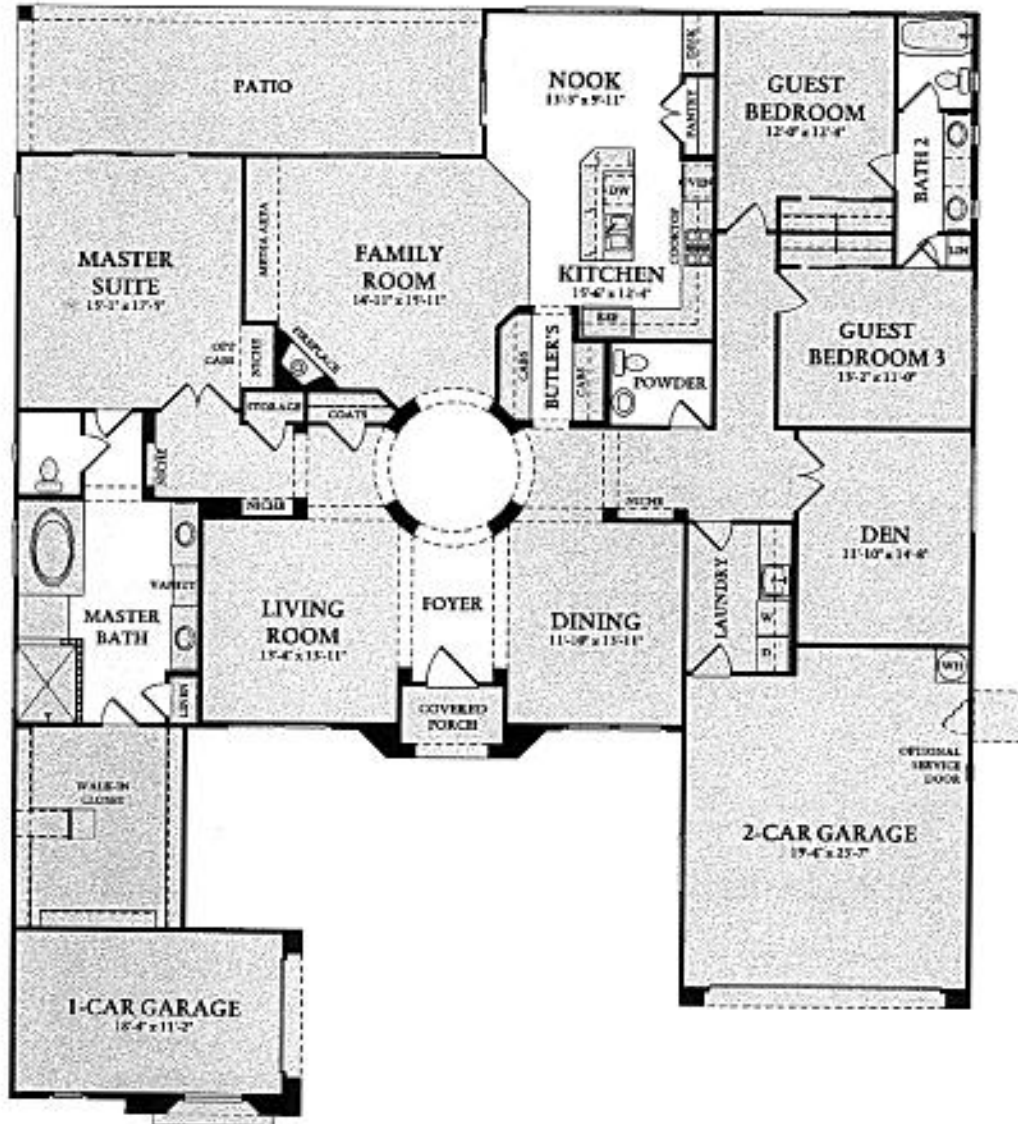
OPTIONAL FULL HEIGHT  
COURTYARD WALL WITH DOOR



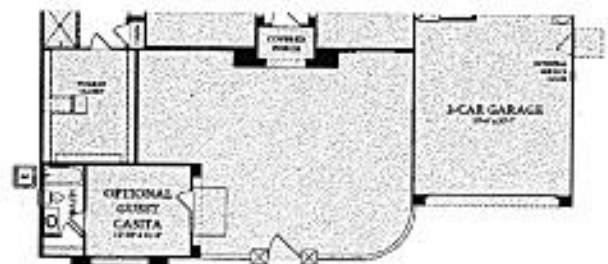
OPTIONAL 4' HIGH COURTYARD  
WALL WITH GATE

*The Granada*

FORMAL LIVING AND DINING ROOMS, FAMILY ROOM WITH FIREPLACE,  
 BREAKFAST NOOK, 3 BEDROOMS, DEN, 2.5 BATHS, 3-CAR GARAGE, COVERED PATIO  
 LIVABLE AREA: 3,027 SQUARE FEET



OPTIONAL FULL HEIGHT  
 COURTYARD WALL WITH DOOR  
 AND CASITA



OPTIONAL 4' HIGH COURTYARD  
 WALL WITH GATE AND CASITA